



2-STAGE TABLE PEDESTAL SYSTEM

The ability to precisely and easily adjust your cruiser's table is important when entertaining guests, having dinner or just cruising down the waterway. The Power-Matic gas-assisted cylinders are the driving force behind these specific adjustments in our 2-Stage Adjustable Table Pedestal System. Not only does this system provide the freedom of perfect adjustments, its ability to be easily removed and stowed is perfect for saving space and time.

FEATURES & BENEFITS

Z80 2000 Series Column

- Power-Matic adjustable height from 19-1/8 inches to 32-1/2 inches
- Gas shock provides smooth operation of column adjustment
- Delrin bearings for smooth operations
- Ribbed surface
- 2-3/8" top tube with 3" bottom tube
- Satin anodized aluminum finish
- Polished, Stainless Steel collars and locking clamps

Z20-3160 Table Support

- Bow-tie design provides superior table support in a shallow profile for increased leg room
- Fits 2-3/8" (60mm) single taper columns

Z10-4080 Table Base

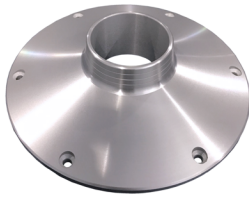
- 3" (76mm) column O.D. ("Outside Diameter")
- Tapered for secure fit

Z10-4070 Table Base

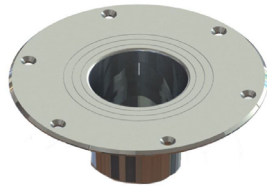
- Tapered for secure fit
- Use with single or a dual taper column when used as a table support



2-STAGE TABLE PEDESTAL SYSTEM



Z10-4070



Z10-4080



Z20-3160



Z80-2190

PART #	LENGTH	COLUMN OUTSIDE D.	BASE OUTSIDE D.	FINISH
Z10-4070BLY76MM	Aluminum Table Base, Surface Mount for 3" Column	76mm (3")	9-7/8"	Brite Anodized
Z10-4080BLY76MM	Aluminum Table Base, Flush Mount for 3" Column	76mm (3")	8-5/8"	Brite Anodized

PART #	DESCRIPTION	LENGTH	FINISH / STYLE
Z20-3160PCS60MM	2-Stage Table Support for 2-3/8" D. Column	19-3/4"	Powder Coat Silver
Z80-2190VEL32.5-PM	2-Stage Powermatic Column	19-1/4 to 32-1/4"	Ribbed
Z80-2603VEL26-PM	2-Stage Powermatic Column	12-5/8 to 26"	Smooth
Z80-2603VEL26-PMS	2-Stage Powermatic Column	12-5/8 to 26"	Anodized

